

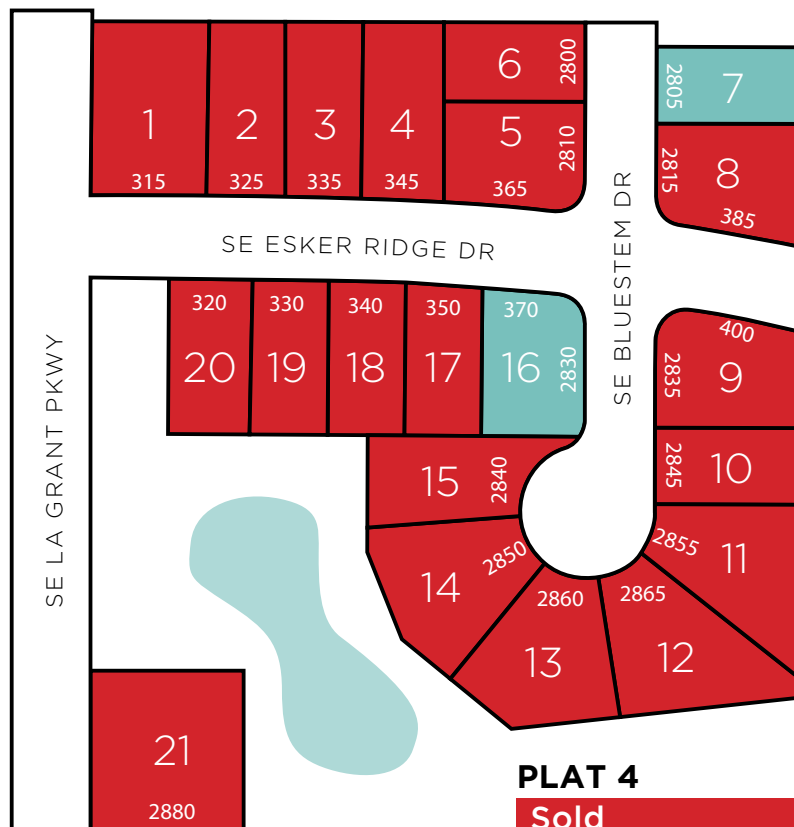


# KETTLESTONE RIDGE

## WAUKEE

### PLAT 4

[www.jerryshomes.com](http://www.jerryshomes.com)



### PLAT 4

**Sold**

**Spec Home**

**Available For BTO**

**School District**  
Waukee

**Nearest Schools**

Maple Grove Elementary, South Middle School, Timberline School (grades 8-9), Waukee High School

**Nearest Grocery**

Fareway, Hy-Vee

**Nearest Gym**

YMCA of Waukee, Lifetime Fitness

**Nearest Shopping Center**

Jordan Creek Town Center

**Home Improvement Store**

Lowe's and Menards

With one of the most affordable and accessible pieces of ground developed in Waukee in the last 5 years, this development will have immediate access to Grand Prairie Parkway via Westtown Parkway. Homes in this area are in the heart of the burgeoning Kettlestone area. Soon to be minutes from shopping, dining and trails! You'll be able to find the perfect location to lay your roots down in one of Waukee's premiere developments, Kettlestone Ridge.

Lot #	Address	Type	Sqft	Price	Style
7	2805 SE Bluestem Dr	Standard	8,129	\$308,765	DUKE EXP
16	370 SE Esker Ridge	DL/WO	10,657	\$334,337	LOLO

**Rick Grubb | 515.779.2192 | [Rick@thehometeamdsm.com](mailto:Rick@thehometeamdsm.com)**

*Listing information subject to change without notice.*



**#SINCE1957**

## Our history builds your future.

*Daylight lots are an additional \$4,000 above listing price. Walkout lots are an additional \$7,000 above listing price.*

